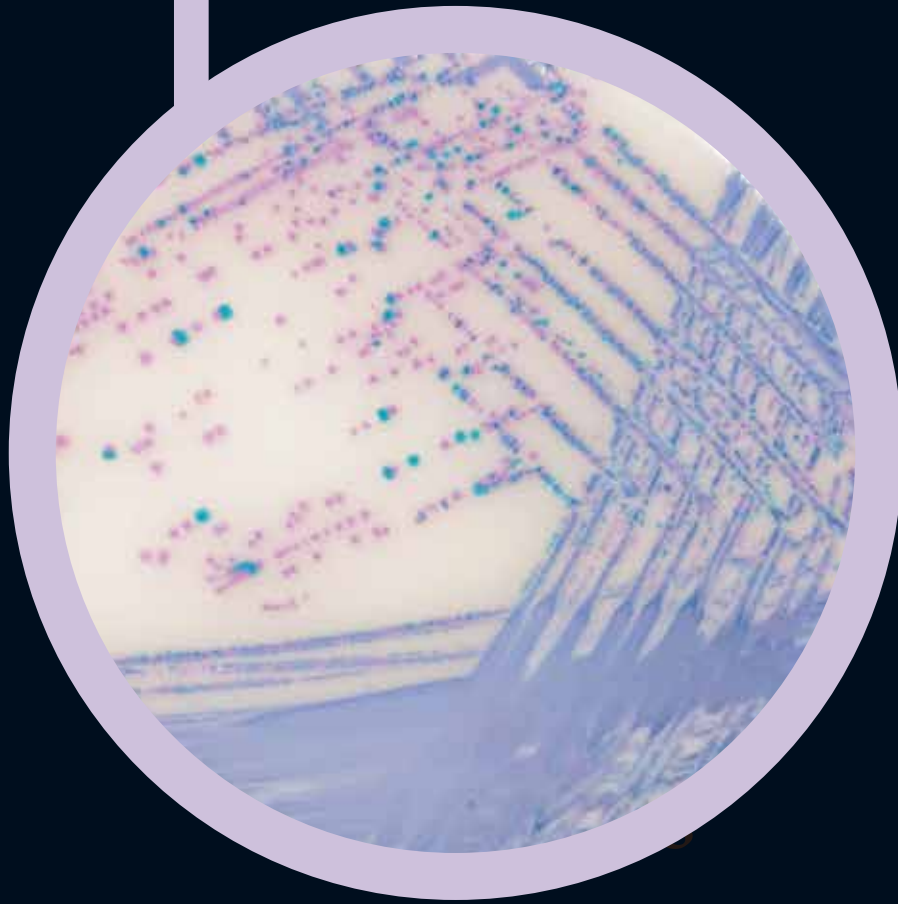


● CHROMagar™ Salmonella Plus



For detection and isolation of *Salmonella*
species including lactose positive *Salmonella*

CHR  **Magar**
The Chromogenic Media Pioneer



● CHROMagar™ Salmonella Plus

www.CHROMagar.com

For detection and isolation of *Salmonella* species including lactose positive *Salmonella* in food samples

Background

Mainly due to contamination in the food chain and/or during food-production processes, *Salmonella* commonly induces enteric illness whose major symptoms are abdominal cramps, diarrhea, nausea, vomiting.

Medium Performance

1 **MEETS ISO 6579:2002 REQUIREMENTS**
by detecting lactose positive *Salmonella*.

2 **EASY TO READ BY NAKED EYE**
Another feature of this new medium resides in its nice colour contrast due to the fact that *E.coli* are colourless. *E.coli*, which are usually present in abundance in samples tested for *Salmonella* and could potentially hide suspect colonies, are no longer a concern.

3 **HIGH SENSITIVITY AND SPECIFICITY**

Salmonella including lactose positive *Salmonella*
99%*

*Specificity and sensitivity from scientific study: "Evaluation of a new chromogenic medium CHROMagar Salmonella Plus for the detection of *Salmonella* species including lactose positive *Salmonella*, *S.Typhi* and *S.Paratyphi*" de Beaumont C., Breuil J., Dedicova D., Tran Q. 2006. Poster presented during ECCMID meeting.

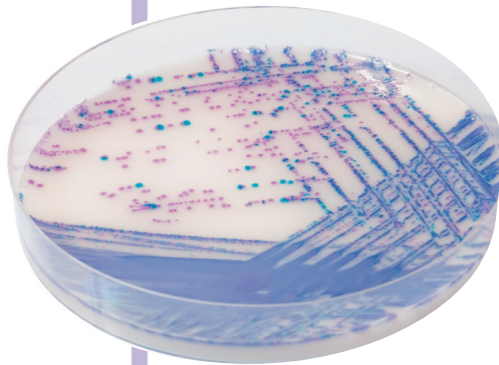
4 **POLYVALENCE**
This medium is also convenient for clinical specimens hosting *Salmonella* such as *S. typhi*, *S. paratyphi*

Medium Description

Powder Base	Total	32.8 g/L
	Agar	15.0
+	Peptone and Yeast extract	8.0
	Salts	8.5
Supplements (included in the pack)	Chromogenic mix	1.3
	Storage at 15/30°C - pH: 7.6 ± 0.2	
	Shelf Life	2 years
	1 st : Liquid form	6.0
	Storage at 15/30°C	Shelf Life
	In order to obtain a white opaque background:	
	2 nd : White Opaque Supplement (Powder):	1.0
	Storage at 15/30°C	Shelf Life
		5 years

Usual Samples	food, meat, fresh eggs, milk products etc.
Procedure	Inoculation after selective broth enrichment of samples according to ISO 6579. Incubation 18-24h at 37°C. Aerobic conditions.

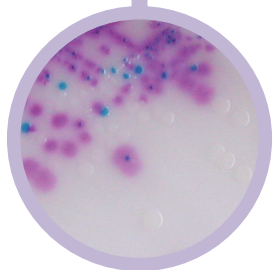
Scientific Publications on this product: available on www.CHROMagar.com
For detailed preparation procedure, please refer to our IFU.



Opaque plate: with CHROMagar™ White Opaque Supplement

Plate Reading

- *Salmonella* including *S.typhi*, *S.paratyphi* A and lactose positive *Salmonella*
→ Mauve
- Coliforms
→ blue
- *E.coli*
→ colourless
- *Proteus*
→ colourless or inhibited



Quality Control Strains

<i>S. abaeutuba</i> ATCC® 35640	mauve
<i>S. typhi</i> ATCC® 13311	mauve
<i>S. enteritidis</i> ATCC® 13076	mauve
<i>S. arizonae</i> CIP 8230	mauve
<i>C. freudii</i> ATCC® 8090	blue
<i>K. pneumoniae</i> ATCC® 13883	blue
<i>S. aureus</i> ATCC® 25923	inhibited
<i>E. faecalis</i> ATCC® 29212	inhibited
<i>S. saprophyticus</i> ATCC® 15305	inhibited
<i>P. aeruginosa</i> ATCC® 9027	inhibited
<i>E. coli</i> ATCC® 51446	colourless
<i>E. coli</i> ATCC® 25922	colourless

ATCC® is a registered trademark of the American Type Culture Collection

Order References

Please use these product references when contacting your local distributor:

- 5000 ml pack SA162
- 25 L pack SA163-25
- Bulk on request

CHROMagar
4 place du 18 juin 1940
75006 Paris - France

Find your nearest distributor on
www.CHROMagar.com/contact