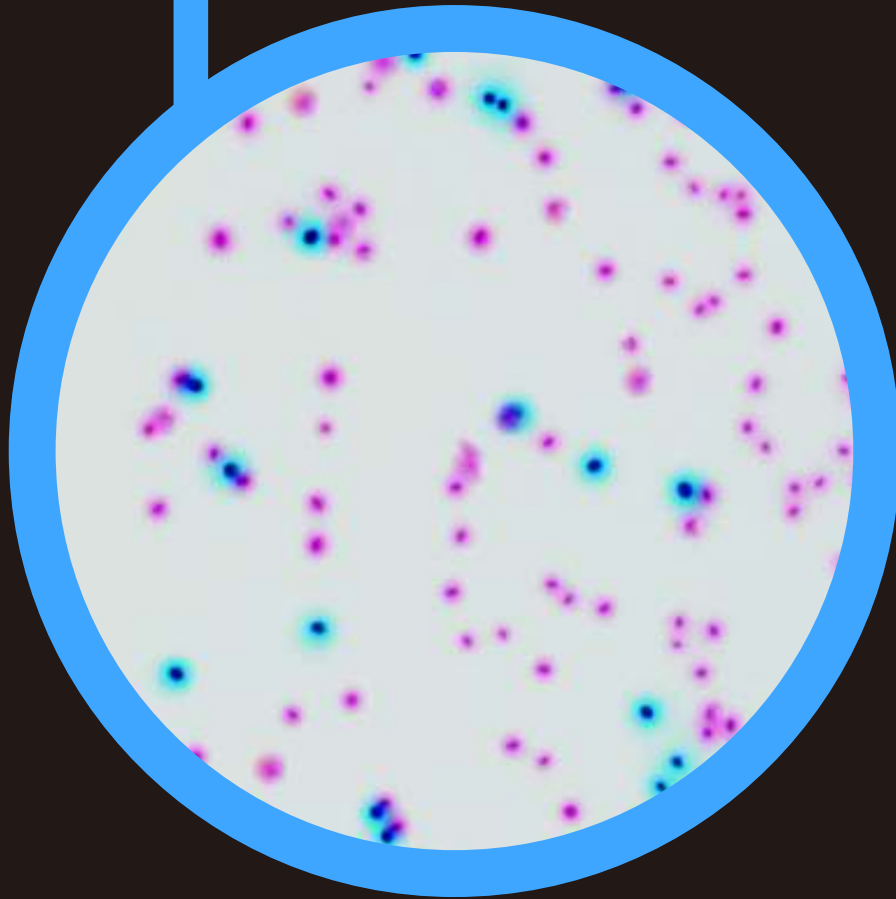


● CHROMagar™ ECC



For the simultaneous detection and enumeration
of *E.coli* and other coliforms

CHR  **Magar**
The Chromogenic Media Pioneer



For the simultaneous detection and enumeration of *E.coli* and other coliforms in food or water samples

Background

Coliforms, *Enterobacteriaceae* able to ferment lactose (lactose positive *Enterobacteriaceae*), are bacteria present in human and warm blooded animals intestinal flora, in the soil and water. Coliforms are proof of organic, environmental or faecal contamination. Faecal contamination, due to coliforms coming from animal waste, consists mainly of *Escherichia coli* and thermotolerant *Klebsiella*.

Strict regulations exist for *E.coli*/Coliform presence in water and food samples. This can be explained by the importance of these germs in determining water and food safety.

E.coli can contaminate drinking water when the water treatment system is inadequate or during periods of very high rainfalls. Monitoring of food and water production is essential. High contamination may lead to suspension of the water supply and food recall by supermarkets. In the U.S.A. the EPA recommendations through the Total Coliform Rule (TRC) are:

- <1000 CFU/100ml for a fishing and boating water quality.
- <100 CFU/100ml for a body-contact recreation water quality.
- <1 CFU/100ml for a drinking water quality.

Medium Performance

1

SIMULTANEOUS DETECTION AND DIFFERENTIATION

CHROMagar™ ECC allows simultaneous detection and differentiation between *E.coli* and coliforms in one medium! This is helpful to determine if there is organic contamination (coliforms) or faecal contamination (*E.coli*). The use of this technique involves less work in comparison with traditional methods (MI Agar).

2

EASY TO READ

thanks to the high colour contrast between colonies. There is no mixing of both colours (unlike some other chromogenic media on the market). Colonies are either mauve or blue (no metallic blue nor purple).

3

CONVENIENT

The media can be used as a poured plate, for isolation, as a support for membrane filtration techniques, or melted with the pour technique.

Medium Description

| Powder Base | |
|--------------------------------------|----------|
| Total | 32.8 g/L |
| Agar | 15.0 |
| Peptone & Yeast extract | 8.0 |
| NaCl | 5.0 |
| Chromogenic mix | 4.8 |
| Storage at 15/30°C - pH: 7.2 +/- 0.2 | |
| Shelf Life | 3 years |

| | |
|---|---|
| Usual Samples | Processed food, raw materials, water, milk & environment samples |
| Procedure | Pouring, Isolation or membrane filtration technique. Incubation 24h, 37°C. Total coliforms detection: Incubation 24h, 30°C. Faecal coliforms detection: Incubation 24h, 44°C. Aerobic conditions. |
| Scientific Publications on this product: available on www.CHROMagar.com Please read carefully the instructions for use (IFU document) available on www.CHROMagar.com | |

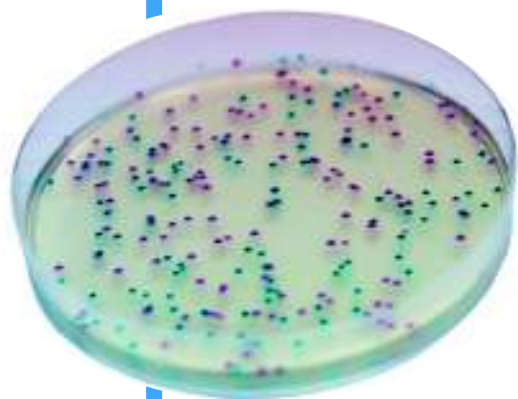
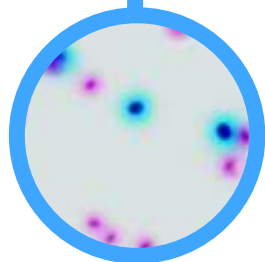


Plate Reading

- *E.coli*
→ Blue
- Other Coliforms
→ Mauve
- Other bacteria
→ Colourless or inhibited



Quality Control Strains

| | |
|--|-----------|
| <i>E. coli</i> ATCC® 25922 | blue |
| <i>C. freudii</i> ATCC® 8090 | mauve |
| <i>E. cloacae</i> ATCC® 35030 | mauve |
| <i>E. aerogenes</i> ATCC® 13048 | mauve |
| <i>K. pneumoniae</i> ATCC® 13883 | mauve |
| <i>S.aureus</i> ATCC® 25923 | inhibited |
| <i>E. faecalis</i> ATCC® 29212 | inhibited |

ATCC® is a registered trademark of the American Type Culture Collection

Order References

Please use these product references when contacting your local distributor:

| | |
|--------------------|------------|
| 1000 ml pack | EF320 |
| 5000 ml pack | EF322 |
| 25 L pack | EF323-25 |
| Bulk size | on request |

Manufacturer: CHROMagar
4 place du 18 juin 1940 75006 Paris - France
Email: CHROMagar@CHROMagar.com
Website: www.CHROMagar.com

Find your nearest distributor on
www.CHROMagar.com/contact