



Easy and Rapid Total Bacteria Count System

DOX SYSTEM

New World of Hygiene Management

3 Advantage Point

1. Easy Manageable
2. Rapid Detectable
3. Multi Testable

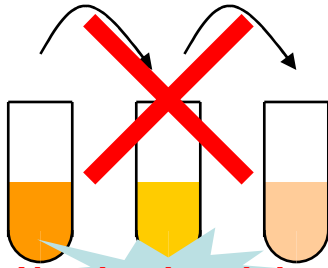




3 Differential Point

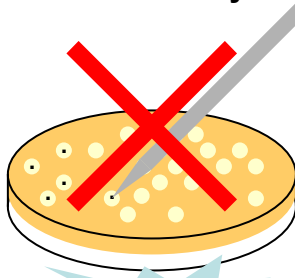
1. Easy Manageable

Need no dilution lines



Need only origin

Need no colony count



Automated counting

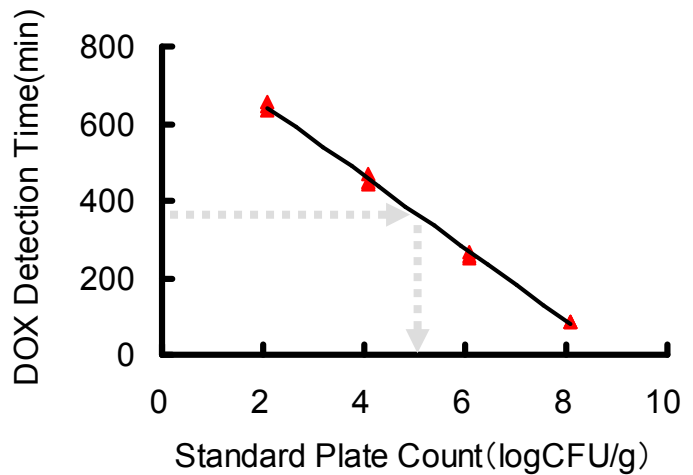
Need no handwriting



Automated recording

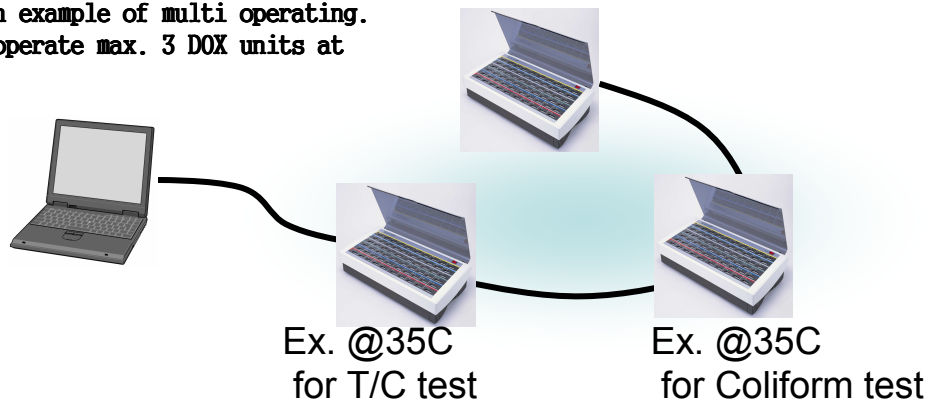
2. Rapid Detectable

This Graph is one of the calibration curve to convert DOX detection time to the value corresponded with standard plate count. This is lined by using the test results of *E.coli*. In this case you can detect 10^8 CFU/g within 6hrs., including preparation and cleanup time



3. Multi Testable

This fig. represents an example of multi operating. Like this, one PC can operate max. 3 DOX units at deferent temperature.



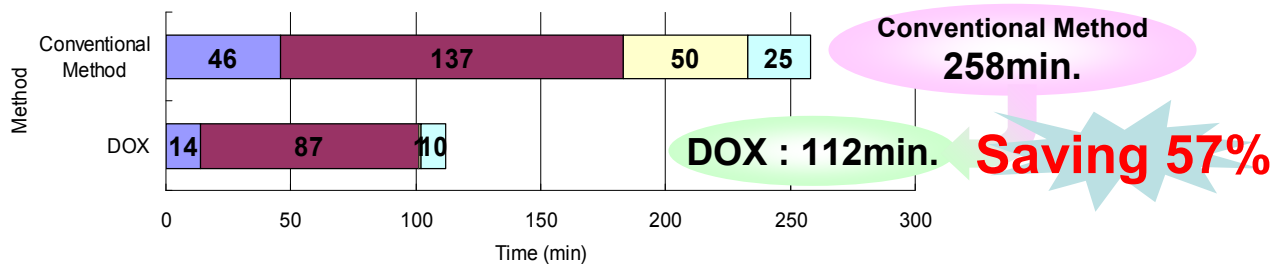
Bio-Theta, Ltd.



Example of Application

1. Saving Time

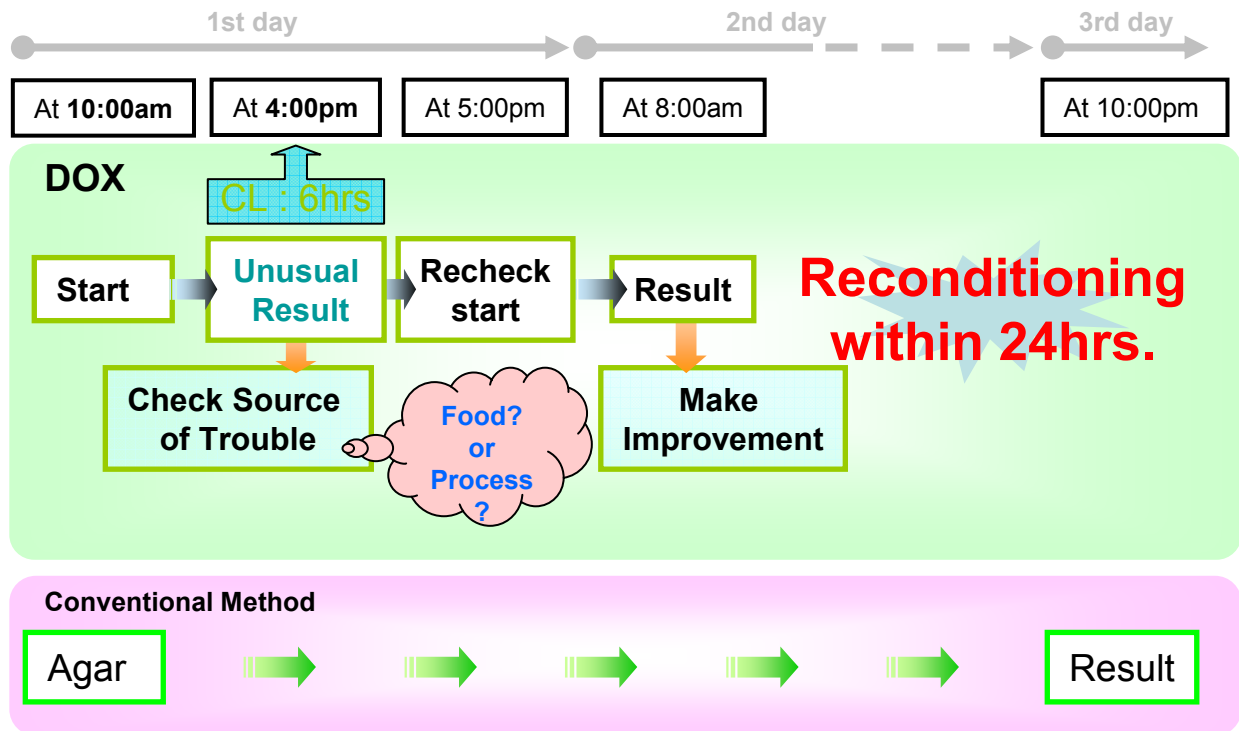
This example is the comparison of time required at 25 T/C test difference between DOX method and conventional method (except the culture time). You can save the test time by 57%.



- Preparation of medium, saline, and Dishes or Cell Cartridges. (Measurement / Autoclaving / etc.)
- Preparation of sample. (Weighting / Stomaching / diluting / etc.)
- Colony counting and reporting
- Cleanup and washing

2. Reconditioning Rapidly

This is a practical example of utilization by CL (Critical Limit) at a food factory. In this case CL is set to 6hrs. If they find the unusual result after 6hrs. they can do the check the source of trouble to the verification of the improvement within only 24hrs.





Introduction of Software

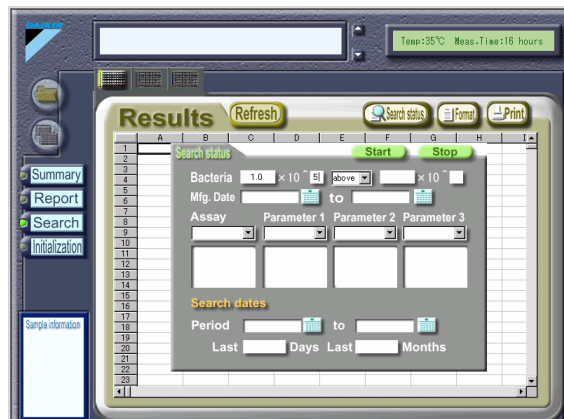
1. Visibility of Status

Easily you can get the information of the measurement status and channel status of DOX system. If DOX detect the unusual result you set, red marker send the message on the screen.



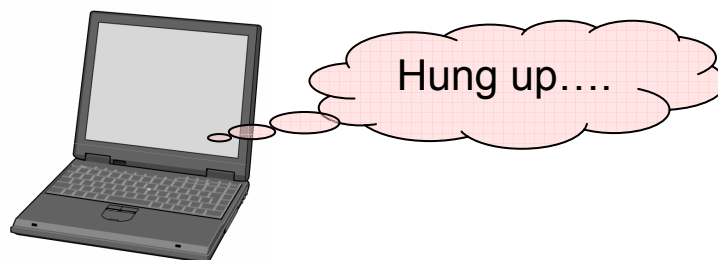
2. Data Management

All test Results are stored on your PC's one folder as the format of the database. So anytime and quickly you can search post measurement data on vary test condition.



3. Recapturing Data in PC's Trouble

Do you worry about PC's hung up? Even if the power is shut off during the measurement, you can recapture the DOX data and carry on the measurement. Because the prior 10hrs of DOX data is automatically saved at the memory IC in DOX apparatus. After restart of DOX, the prior data will be automatically read, and the test resumed.



Bio-Theta,Ltd.



E-Bio

Specification of DOX

Rating Power Input Voltage	AC100 ~ 120V
Rating Power Input Frequency	50 / 60Hz
Channel Number	60ch / 30ch
Usable Environmental Temperature	15 ~ 30°C
Usable Environmental Humidity	20 ~ 80%RH (without dew condensation)
Rating Expended Power	60F:170W /30F:90W
Size	60F: W600 / H120 / D310mm 30F: W430 / H120 /D310mm
Weight	60F:13.4kg 30F:8.9kg
Data Acquisition Method	Transmission to computer (Windows OS)
Maximum Number Of Units Controllable by One PC	3 units as deferent temp. (30ch x 3units = 90ch)
Communication Protocol (DOX - PC)	RS-232C (USB translatable)
Measurement Interval	60 seconds

Contact Us

Bio-Theta, ltd



EXPORT AGENT
E-Bio Ltd
Tokyo Japan
WWW.e-bio-japan.co.jp